

CATALOG

PREFABRICATED SOLUTIONS

2026



Connecting the Mission-Critical Supply Chain

www.c&o.supply
www.atrongroup.com

Table of Contents

- About C&O Assembly
- Device & Rough-In Systems
- Underground Systems
- Structural & Deck Systems
- Raceway Systems
- Power Distribution Assemblies
- Industrial Control & Critical Power
- Fabrication & Enclosures
- Rooftop Systems
- Identification Systems
- Field & Deployment Systems
- Certification & Compliance





Assembled & Built for Execution

Construction schedules are tighter than ever and field labor is stretched thin. C&O Assembly relocates electrical assemblies from the jobsite to a controlled manufacturing environment – delivering consistency, organization, and installation readiness.



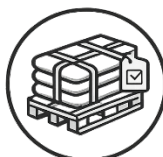
Collaborative

We coordinate with your project team to identify prefab opportunities and define clear build scopes based on issued drawings.



Build Off-Site

Assemblies are fabricated in our controlled facility using repeatable processes, quality checks, and organized material flow.



Deliver and Install

Products arrive labeled, sequenced, and ready for installation – reducing field labor and improving jobsite coordination.

Device & Rough-In Systems

Pre-assembled box and device coordination solutions designed to reduce field fabrication during framing and wall build-out phases. Built for repeatable installation quality across electrical rooms, support spaces, and tenant-controlled environments.

ATCO-DEV-001

Universal Junction Box Assemblies



Description

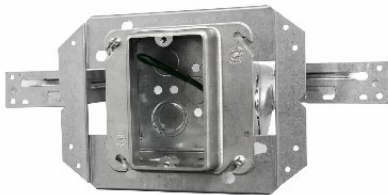
Prefabricated junction box assemblies designed to streamline device rough-in within structured data center environments.

Options

Box size; Multi-gang configuration; Conduit entry orientation; Grounding options; Pre-labeled assemblies; Tethered cover; Grounding wire.

ATCO-DEV-002

Standard Junction Box Assemblies



Description

Installation-ready junction box systems fabricated to reduce repetitive field assembly and improve consistency across multi-room deployments.

Options

Box depth; Device type; Conduit stub length; Mounting brackets; Integrated ground pigtails

ATCO-DEV-003

Single Box Slider Assemblies



Description

Adjustable rough-in box systems designed to maintain alignment within framed wall systems during phased installation.

Options

Single-gang; Dual-gang; Adjustable depth; Pre-installed conduit stubs; Specialty device configurations

ATCO-DEV-004

Power/Data Slider Assemblies



Description

Integrated power and low-voltage rough-in assemblies engineered to maintain separation and alignment in structured builds.

Options

Power + data combinations; Multi-gang options; Pre-terminated low-voltage pathways; Custom layouts

ATCO-DEV-005

System Stub Assemblies



Description

Prefabricated conduit stub-up systems designed to support equipment feeds and device rough-in prior to final terminations.

Options

Conduit size; Stub height; Multi-conduit banks; Labeled identification; Firestop-ready options

ATCO-DEV-006

MC Wire Rough Assemblies



Description

Pre-assembled MC cable rough-in systems integrating box, bracket, and pre-measured cable lengths for repeatable installation.

Options

Cable length; Conductor size; Voltage rating; Device type; Connector configuration

ATCO-DEV-007

Surface Mount Assemblies



Description

Prefabricated surface-mounted device assemblies including box, conduit stub, and device termination support.

Options

Device type; Conduit orientation; Multi-gang configuration; Labeling integration

ATCO-DEV-008

Fire Alarm System Stub



Description

Prefabricated fire alarm rough-in stub assemblies engineered to streamline device installation within mission-critical facilities. Built to coordinated elevations and wall conditions, these assemblies ensure consistent conduit placement and box alignment prior to drywall and finish installation.

Options

- Conduit size and type (EMT, MC, flex)
- Single or multi-gang box configuration
- Adjustable elevation bracket
- Wall type configuration (metal stud, CMU, concrete)
- Red device box or standard finish
- Pre-installed bushing or connector
- Pre-labeled by device ID or zone
- Fire-rated wall assembly coordination

ATCO-DEV-009

Light Fixture Assemblies



Description

Prefabricated lighting rough-in and support assemblies designed to maintain fixture alignment, elevation, and structured conduit routing in high-density data center and industrial environments. Delivered job-ready to reduce field layout time and improve installation consistency.

Options

- Fixture type (high bay, low bay, linear, vapor tight, architectural)
- Conduit drop length (project specified)
- Mounting configuration (rod, chain, surface, strut)
- Pre-installed junction box
- Integrated fixture whip
- Seismic-rated hardware
- Pre-labeled circuit identification
- Voltage configuration

Underground Systems

Prefabricated underground electrical infrastructure systems engineered for data center campus environments. Designed to support duct banks, service entrances, and site-level distribution while improving conduit alignment, reducing field layout time, and increasing installation consistency.

ATCO-UG-001

Duct Bank Templates



Description

Prefabricated conduit spacing systems are designed to maintain precise conduit alignment within underground duct banks for data center campus distribution.

Options

- Conduit size compatibility (PVC, HDPE, Steel)
- Tier spacing configuration
- Custom bank widths
- Material type selection
- Engineered stamped designs
- Pre-labeled assemblies
- Galvanized or coated hardware

ATCO-UG-002

Duct Bank Template Frames



Description

Engineered template frames designed to maintain conduit positioning during concrete encasement and underground installation.

Options

- Custom conduit count
- Bank geometry configuration
- Adjustable or fixed spacing
- Reinforced frame construction
- Job-specific identification tags
- Integrated lifting points
- Galvanized or coated finish

ATCO-UG-003

Rebar Stakes & Anchoring Systems



Description

Fabricated anchoring components designed to secure underground conduit assemblies and maintain placement during concrete pour.

Options

- Custom stake lengths
- Diameter selection (#4, #5, or project specified)
- Coated or galvanized finish
- Integrated tie-down hardware
- Pre-bundled installation kits
- Cut-to-length fabrication
- Bend engineering (if required)

ATCO-UG-004

Reinforcement Mat Systems



Description

Prefabricated rebar reinforcement frames engineered to support underground conduit banks in data center campus installations. Delivered ready to place, these assemblies improve alignment, accelerate installation, and provide consistent structural reinforcement prior to concrete encasement.

Options

- Rebar size (#4, #5, or project specified)
- Mat thickness and cage height
- Bank geometry (rectangular, square, staggered)
- Integrated spacer attachment points
- Heavy-duty or standard-duty reinforcement configuration
- Galvanized or epoxy-coated rebar
- Lifting hooks or crane pick points
- Stamped engineering (if required)
- Job-specific tagging or area identification

ATCO-UG-005

Threaded Nipples



Description

Prefabricated threaded conduit nipples manufactured to project-specified lengths to streamline underground and equipment terminations within data center electrical distribution systems.

Options

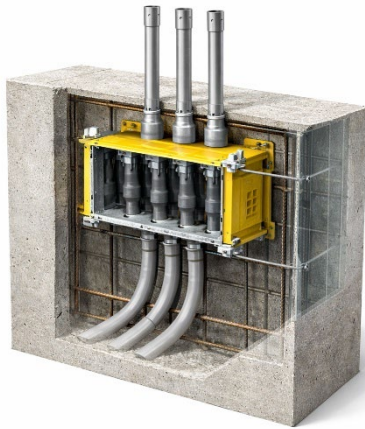
- Length (cut-to-spec)
- Conduit size ($\frac{1}{2}$ "-6"+)
- Material type (Rigid Steel, IMC, Stainless)
- Hot-dip galvanized finish
- Factory-threaded both ends
- Coupling included (optional)
- Pre-bundled by area or phase
- Job-specific labeling

Structural & Deck Systems

Cast-in-place and slab coordination assemblies built to streamline rough-in installation within mission-critical facilities. Engineered to maintain precise device placement, sleeve coordination, and structured routing within high-density data center construction.

ATCO-STR-001

Structural Box Assemblies



Description

Prefabricated structural embed box systems engineered for slab, cast-in-place wall, floor, and CMU masonry installations within data center facilities. Designed to maintain precise elevation, alignment, and coordinated conduit entry during structural construction phases.

Options

- Slab pour configuration
- Cast-in-place wall configuration
- CMU block configuration
- Adjustable elevation brackets
- Fire-rated assemblies

ATCO-STR-002

Deck Sleeve Assemblies



Description

Pre-engineered sleeve assemblies designed to maintain precise conduit and cable pass-through locations within elevated slabs and structural decks.

Options

- Sleeve diameter; Multi-sleeve banks;
- Firestop-ready configurations;
- Labeled penetrations; Adjustable brackets

ATCO-STR-003

Floor Box Assemblies



Description

Prefabricated floor-mounted box systems engineered for slab coordination and structured cabling integration in mission-critical facilities.

Options

Power/data combination; Depth configuration; Cover finishes; Gasketed options; Labeling integration

ATCO-STR-004

Wall Sleeve Assemblies



Description

Prefabricated wall sleeve systems designed for structured conduit and cable transitions through rated and non-rated walls.

Options

Sleeve size; Multi-sleeve banks; Fire-rated systems; Identification tagging; Custom layouts

Raceway Systems

Engineered conduit and cable containment support systems designed for overhead, corridor, and infrastructure routing within data halls and MEP zones. Fabricated to improve coordination, reduce repetitive labor, and support high-density cable management.

ATCO-RWY-001

Strut / Trapeze Rack Systems



Description

Prefabricated strut-based support systems engineered to organize and support conduit and cable routing in high-density overhead environments.

Options

Single-tier or multi-tier racks; Back-to-back configurations; Custom widths; Seismic bracing options; Corrosion-resistant finishes

ATCO-RWY-002

Homerun Box Assemblies



Description

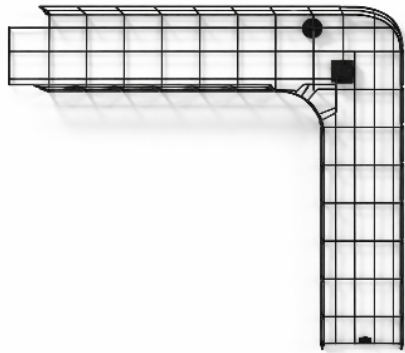
Prefabricated consolidation box systems designed to organize high-count conduit homeruns in structured environments.

Options

Single or multi-side entry; Custom KO layouts; Pre-labeled terminations; High-capacity configurations

ATCO-RWY-003

Pre-Bent Cable Tray Systems



Description

Fabricated cable tray sections engineered to reduce onsite bending and improve alignment in large-scale deployments.

Options

Radius size; Ladder or solid-bottom tray; Coating options; Custom drop points; Multi-level tray assemblies

ATCO-RWY-004

Cable Tray Drop Assemblies



Description

Prefabricated vertical drop assemblies designed to transition tray systems from overhead containment to equipment or rack-level feeds.

Options

Single or multi-cable drops; Fire-rated transitions; Seismic support options; Labeled routing bundles

ATCO-RWY-005

Pre-Bent EMT Assemblies



Description

Prefabricated EMT conduit assemblies manufactured to project-specific layouts to eliminate field bending and improve installation efficiency in structured commercial and data center environments.

Options

Conduit size (1/2"-2"+); Offset depth; Saddle bends; 90° / 45° / Custom geometry; Multi-conduit bundles; Identification labeling; Color marking; Pre-installed couplings

Power Distribution Assemblies

Prefabricated branch-level power distribution systems built to support rack feeds, equipment connections, and localized distribution within data center environments. Designed for job-ready installation and reduced field termination time.

ATCO-PWR-001

Power Whips



Description

Prefabricated flexible power cable assemblies built to project-specified lengths and terminations to streamline equipment connections.

Options

Length; Conductor size; Voltage rating; Connector type; Color coding; Labeling integration

ATCO-PWR-002

Multi-Tap Boxes (MTBs)



Description

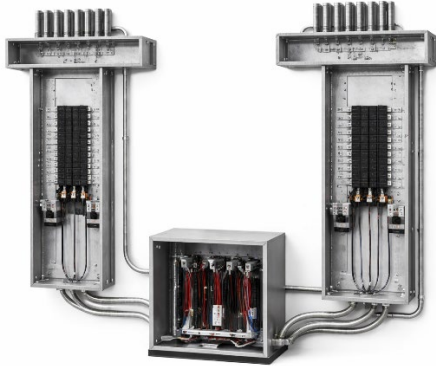
Prefabricated multi-tap distribution boxes designed to consolidate feeder circuits and simplify branch-level power distribution.

Options

Amperage rating; Lug configuration; Enclosure type; NEMA rating; Pre-installed labeling

ATCO-PWR-003

Load Center



Description

Prefabricated load center assemblies engineered for structured branch circuit deployment in mission-critical environments.

Options

Panel rating; Breaker configuration; Mounting style; NEMA enclosure options; Labeling systems

ATCO-PWR-004

Distribution Junction Assemblies



Description

Pre-assembled junction and splice systems designed to manage feeder transitions and organized branch routing.

Options

Conductor capacity; Entry configuration; Fire-rated assemblies; Custom KO layouts; Identification tagging

Industrial Control & Critical Power

Factory-built power distribution and control systems supporting mission-critical infrastructure. Integrating primary distribution, secondary distribution, and automation platforms into coordinated, factory-assembled solutions.

ATCO-EPS-001

Medium Voltage Metal-Clad Switchgear



Connecting the Mission-Critical Supply Chain

Description

Medium voltage metal-clad switchgear assemblies engineered to support primary utility distribution within data center campuses.

Options

Voltage class; Breaker type; Relay configuration; Arc-flash mitigation; Utility metering integration; Indoor or outdoor lineup

ATCO-EPS-002

Medium Voltage Load Interrupter



Connecting the Mission-Critical Supply Chain

Description

Metal-enclosed load interrupter switchgear designed for campus loop distribution and sectionalizing.

Options

Voltage rating; Fused or non-fused configuration; Loop or radial feed; Pad-mount or indoor lineup; Monitoring integration

ATCO-EPS-003

Low Voltage Switchgear



Connecting the Mission-Critical Supply Chain

Description

Low voltage distribution switchgear assemblies built for facility-level power distribution and protection.

Options

Bus rating; Breaker configuration; Draw-out or fixed mount; Arc reduction systems; Utility metering; Seismic rating

ATCO-EPS-004

Automatic Transfer Switch (ATS)



Connecting the Mission-Critical Supply Chain

Description

Engineered automatic transfer switch systems designed to maintain uninterrupted power between utility and generator sources

Options

Open or closed transition; Service entrance rated; Bypass isolation; Monitoring integration; Voltage configuration

ATCO-EPS-005

Low Voltage Switchboard



Connecting the Mission-Critical Supply Chain

Description

Low voltage switchboard assemblies engineered for structured branch and feeder-level distribution.

Options

Bus rating; Breaker configuration; Service entrance rating; Section count; Integrated metering

ATCO-EPS-006

Power Distribution Units (PDUs)



Connecting the Mission-Critical Supply Chain

Description

High-density secondary distribution units engineered for structured rack-level deployment within white space environments.

Options

Voltage configuration; Breaker layout; Monitoring integration; Transformer isolation; Mounting style

ATCO-EPS-007

Static Transfer Switch (STS)



Connecting the Mission-Critical Supply Chain

Description

Solid-state transfer systems designed to provide instantaneous source switching for mission-critical loads.

Options

Current rating; Redundant configuration; Monitoring platform; Rack or lineup mount

ATCO-EPS-008

Remote Power Panels (RPPs)



Connecting the Mission-Critical Supply Chain

Description

Branch circuit distribution panels engineered to extend PDU-level power distribution within structured data hall environments.

Options

Panel configuration; Breaker count; Monitoring integration; Floor or wall mount; Custom labeling

ATCO-EPS-009

UL 508A Industrial Control Panels



Connecting the Mission-Critical Supply Chain

Description

Custom UL 508A listed control panels engineered for monitoring, automation, and coordinated equipment control within mission-critical facilities.

Options

PLC platform; Communication protocol; Enclosure rating (NEMA 1/3R/4/12); Network integration; Redundant control architecture; Environmental hardening; Panel-mounted HMI; Remote monitoring integration.

Fabrication & Enclosures

Precision-fabricated electrical enclosures and structural components supporting custom layouts, equipment elevation, and enclosure integration. Designed to meet NEMA requirements and project-specific coordination within electrical rooms and equipment areas.

ATCO-FAB-001

NEMA 1 Custom Enclosures



Description

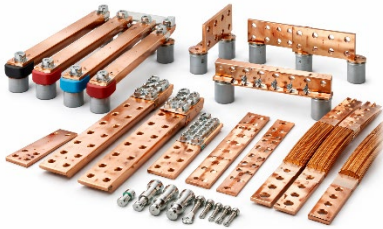
Custom-fabricated NEMA 1 enclosures engineered for indoor electrical distribution and control applications.

Options

Enclosure dimensions; Knockout configuration; Mounting backplates; Powder coat finish; Labeling integration

ATCO-FAB-002

Copper Bus & Ground Bar Assemblies



Description

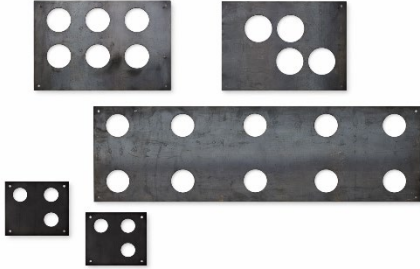
Prefabricated copper bus bar assemblies engineered for high-capacity power distribution and equipment interconnection within mission-critical facilities. Designed to provide reliable, low-impedance current transfer while maintaining organized routing, structural integrity, and coordinated installation across electrical rooms and equipment skids.

Options

- Copper bar sizing (width and thickness)
- Amperage rating
- Tin-plated or bare copper finish
- Drilled hole patterns
- Custom bolt spacing
- Insulated or non-insulated configurations
- Phase identification marking
- Pre-installed mounting brackets
- Stand-off insulator systems
- Edge-rounded safety finish
- Flexible laminated bus options
- Transition plates or adapter kits
- Pre-labeled identification

ATCO-FAB-003

Sheet Metal Fabrication Components



Description

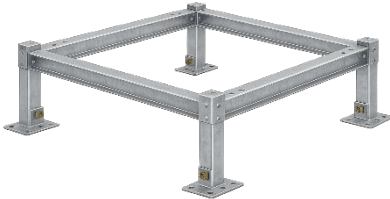
Custom-fabricated sheet metal components supporting electrical infrastructure coordination and equipment integration.

Options

Material type; Finish options; Mounting hole patterns; Reinforced structural designs; Pre-labeled components

ATCO-FAB-004

Equipment Frames



Description

Structural support assemblies engineered to elevate and stabilize transformers and electrical equipment within mission-critical facilities.

Options

Custom height; Corrosion-resistant finish; Anchor bolt templates; Integrated grounding provisions

ATCO-FAB-005

Equipment Skids



Description

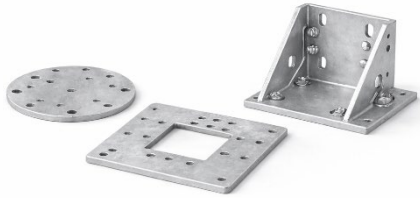
Prefabricated equipment skid assemblies engineered to support integrated mechanical and electrical systems in industrial and mission-critical environments. Built within a controlled manufacturing setting, these assemblies consolidate structural support, power distribution, controls, and wiring into a single, installation-ready platform – reducing field labor, improving coordination, and accelerating deployment.

Options

- Custom dimensions & load ratings
- Steel (carbon, galvanized, stainless)
- Seismic-rated configurations
- Integrated UL 508A panels
- Power distribution (disconnects, breakers, bus)
- Hazardous location builds
- Cable tray or conduit integration
- Corrosion-resistant finishes
- Skid-mounted transformer or PDU
- Factory testing & pre-commissioning

ATCO-FAB-006

Custom Mounting Plates & Brackets



Description

Fabricated mounting systems designed to support equipment integration, device mounting, and enclosure customization.

Options

Plate thickness; Hole pattern configuration; Coating options; Reinforced designs; Custom cutouts

Rooftop Systems

Prefabricated rooftop electrical support systems engineered to improve equipment coordination, conduit organization, and installation consistency across data center and industrial facilities. Designed to reduce field fabrication, maintain proper elevation and load distribution, and streamline routing above roof assemblies while supporting long-term structural integrity and serviceability.

ATCO-RTP-001

Rooftop Panel Support Assemblies



Description

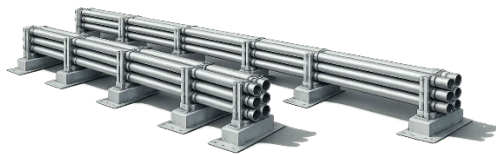
Prefabricated rooftop structural support assemblies engineered to elevate and secure electrical panels, disconnects, combiner boxes, and related equipment above roof membranes. Designed to maintain proper load distribution, elevation control, and coordinated conduit routing while reducing field fabrication and improving installation consistency.

Options

- Frame height (project specified)
- Equipment footprint size
- Load rating configuration
- Adjustable leveling feet
- Anchor plate design
- Galvanized, stainless, or powder-coated finish
- Integrated strut channels
- Roof membrane protection pads
- Integrated grounding provisions
- Pre-drilled mounting patterns
- Job-specific tagging or labeling

ATCO-RTP-002

Rooftop Conduit Rack Systems



Description

Prefabricated rooftop conduit rack systems engineered to support organized conduit routing across roof assemblies in mission-critical and industrial facilities. Designed to maintain consistent elevation, load distribution, and coordinated layout, these assemblies reduce field fabrication, improve installation efficiency, and protect roof membrane integrity while supporting structured electrical infrastructure.

Options

- Conduit capacity (single-tier or multi-tier configurations)
- Rack width and length (project specified)
- Integrated strut channels for flexible routing
- Galvanized, stainless, or powder-coated finish
- Integrated grounding provisions
- Pre-installed conduit clamps or spacing guides
- Pre-labeled rack identification

ATCO-RTP-003

Rooftop Conduit Riser Assemblies



Description

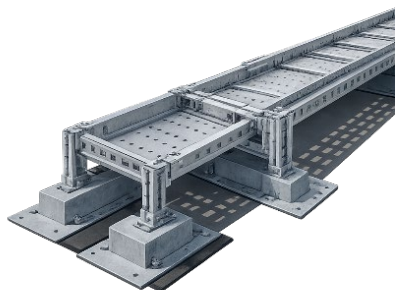
Prefabricated rooftop conduit riser assemblies engineered to provide structured transitions from interior electrical distribution to rooftop-mounted equipment. Designed to maintain weather protection, elevation control, and coordinated routing while reducing field bending and installation variability.

Options

- Conduit size and quantity;
- Gooseneck or straight riser configuration;
- Anchored or curb-mounted base;
- Flash-ready boot integration;
- Galvanized or stainless finish;
- Integrated grounding provisions;
- Pre-labeled identification.

ATCO-RTP-004

Rooftop Cable Tray Support Assemblies



Description

Prefabricated rooftop cable tray systems engineered to support structured cable routing across roof assemblies in mission-critical and industrial facilities. Designed to maintain consistent elevation, load distribution, and coordinated pathway alignment while reducing field cutting and installation variability.

Options

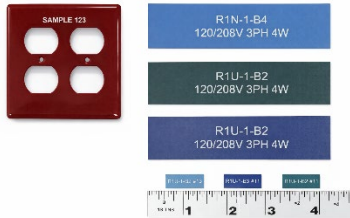
- Tray type (ladder or solid-bottom);
- Tray width and depth;
- Fixed or adjustable elevation height;
- Anchored or non-penetrating base design;
- Expansion joint integration;
- Seismic-rated configurations;
- Galvanized, aluminum, or powder-coated finish;
- Integrated grounding provisions;
- Pre-labeled routing identification.

Identification Systems

Professional-grade labeling and identification systems engineered for long-term clarity, compliance, and coordinated documentation within mission-critical installations.

ATCO-ID-001

Custom Electrical Labels



Description

Professional-grade labeling systems engineered to support electrical identification, circuit marking, and infrastructure coordination.

Options

Material type (vinyl, laminated, engraved); Color coding; Adhesive or mechanical mount; Serialized identification; Barcode/QR integration

ATCO-ID-002

Engraved Plates & Identification Tags



Connecting the Mission-Critical Supply Chain

Description

Precision-engraved identification plates designed for permanent equipment labeling and compliance documentation.

Options

Plate size; Mounting hole configuration; Text layout; Color scheme; Serialized numbering

ATCO-ID-003

Equipment & Circuit Identification Kits



Connecting the Mission-Critical Supply Chain

Description

Pre-configured labeling kits designed to streamline field deployment and maintain consistent infrastructure identification across large facilities.

Options

Color coding; Serialized kits; Floor/zone-based grouping; Weather-resistant options

Field & Deployment Systems

Modular support and staging solutions designed to enhance jobsite organization, deployment efficiency, and coordinated installation during fast-paced data center construction schedules.

ATCO-FLD-001

Job Boxes



Connecting the Mission-Critical Supply Chain

Description

Custom-fabricated job boxes designed to organize and protect electrical materials and prefabricated assemblies during active construction phases.

Options

Box size; Compartment configuration; Coating finish; Casters or forklift pockets; Serialized identification

ATCO-FLD-002

Temporary Power Deployment Assemblies



Connecting the Mission-Critical Supply Chain

Description

Pre-assembled temporary power systems engineered to support phased commissioning and active construction power needs.

Options

Voltage rating; Distribution configuration; Cam-lock integration; Outdoor-rated enclosures; Monitoring integration

ATCO-FLD-003

Modular Equipment Staging Frames



Connecting the Mission-Critical Supply Chain

Description

Fabricated structural staging frames designed to support organized equipment layout prior to permanent installation.

Options

Frame size; Adjustable leveling; Seismic anchoring; Protective coatings; Custom equipment mounting points

Certifications & Compliance

ATRON operates within certified quality systems that govern how we build, test, and deliver every assembly. Our certifications demonstrate adherence to nationally recognized standards for safety, traceability, and performance – ensuring that customers receive infrastructure built for demanding industrial and mission-critical environments.

UL LISTED & RECOGNIZED CATEGORIES

UL 508A – Industrial Control Panels

CCN: NITW (US)

CCN: NITW7 (Canada)

Factory-built industrial control panels evaluated under UL 508A and CSA C22.2 No. 14 standards. Covers power distribution, automation panels, and integrated control systems.

Industrial Control Panels for Hazardous Locations

CCN: NNNY (US)

CCN: NNNY7 (Canada)

Industrial control panels and assemblies certified for use in classified hazardous environments.

Industrial Control Panels Relating to Hazardous Locations

CCN: NRBX (US)

CCN: NRBX7 (Canada)

Control panels associated with hazardous location applications, including integration with approved enclosures and protection methods.

Wiring Harnesses – UL Recognized Component

CCN: ZPFW2 (US)

CCN: ZPFW8 (Canada)

Factory-built wiring harnesses evaluated as UL Recognized components for integration into larger systems.

Wiring Assemblies – UL Recognized Component

CCN: QQYZ (US)

Pre-terminated and structured wiring assemblies evaluated as UL Recognized components for use in electrical equipment and control systems.

ATRON's compliance portfolio reflects disciplined manufacturing practices, documented traceability, and safety-focused execution across power, controls, and wiring systems.